



ARASYA PLASTIC

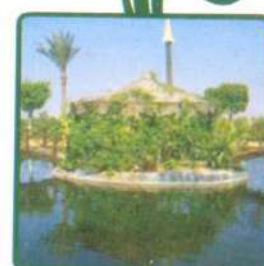
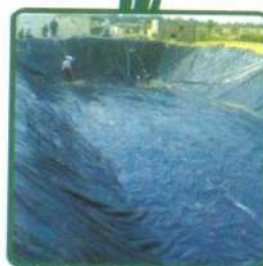
Introduction:

Set up by Engineer / Mohamed Ali Mohamed Arasya Plastic Company in 2002 and to work in the fields of lining and insulation and insulation products (polyethylene - PVC - Geo textile) Supply and installation of an effort to provide the best products and best service to all customers in all different area as of the field of agricultural and fish and Poultry And a construction area and the area of Landscape and the area of oil and mining - are divided into product's:

1 - Product polyethylene and split into two parts:

(A) Polyethylene black and blue color with different thickness (500 microns to 5000 microns) Using a lining in the areas of lakes and lining water tanks and insulation, foundation and roof insulation and other wider use in many different areas .

(B) Polyethylene black and transparent color with different thickness (60 microns to 500 microns) using in the fields of construction with scrub down shedding, some wider use in other areas of the different .



2- Geo - textile Product

Product available with different thickness from (50 Gram to 1000 Gram) working in the fields of many different areas:

(A) Layer of protection uses the bottom or top of the insulating layer to protect it from bumps, rocks and other small factors that could lead to abuse of the insulating layer.

(B) Uses a layer of filter Drainage and water pipes and other wider use in many areas.

3- P.V.C product:

Product available with different thickness from (100 Micron to 2500 Micron) with different color and distinguish the presence of arming some of its products inside of glass fiber and other fibers so as to ensure tensile strength.

(A) And distinguish the presence of arming some of its products inside of glass fiber and other fibers so as to ensure tensile strength.

(B) Used to isolate the foundations, roofs, other water and other wider use in many different areas.



That all products of Arasya Plastic company holds all approvals and laboratory test confirming the conformity of all products to the international standards in all tested functional .

Field installation:

Products are used polyethylene and P.V.C and Geo - textile in Field installation many purposes in order to protect the installations of non-permeability of water and moisture to and from the facilities to be protected. And the facilities to be protected in order to preserve them from corrosion and ruthless in order to ensure increased life span and not to raise the financial costs to re-reform Or maintenance and is characterized by the capacity of the products mentioned above will suffice to prevent the permeability of water and any fluids which because of their properties and mechanical suffice to prevent the permeability of water and any fluids which because of their physical properties and chemical them is not affected or react with any materials chemicals or contact with them and also characterized in its ability to withstand all weather conditions and stress, which is could be exposed .

And also to use these insulation materials directly on the soil and sand without any intervention of a construction so as to create artificial lakes and water bodies, which makes the lack of construction costs of the lake.



Some of using product in Field installation :

- 1 - Insulating surfaces and the foundations and flower base.
- 2 - Isolation fountains and waterfalls and swimming pools.
- 3 - Isolate the tunnels and fences, security safes and industrial concrete structures.
- 4 - Lining artificial lakes and all other shapes
- 5 - Lining stations and sewage oxidation ponds
- 6 - Geo - textile to protect the insulation , drainage, and filtration processes.
- 7 - Transparent plastic and black with thickness light to use scrub under concrete and other uses.





ARASYA PLASTIC

Agricultural field

The agricultural area is divided into three important areas are the water tanks on farms and the area of aquaculture and the domain of animal and poultry.

1- The area of water storage basins farms (used a product polyethylene in different thickness)

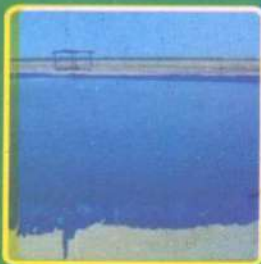
Given the numerous problems faced by all farms in the absence of water needed for irrigation lowering the result of a rotation and COPD winter and the problems of the main water lines feeding farms, as well as salting, and impurities and low water reserve in wells and canals it was necessary to preserve every drop of water needed by the plant may thus become an urgent need and necessary for the existence of water basins, safes farmland agriculture to get rid of all the problems facing the process of agriculture because of water through the drilling of water storage tank on the sand and soil directly without the intervention of any of the construction materials and processing of pelvic geometrical dimensions required tendencies of the settlement ponds and trench and deepening digging as the space required to store the amount of water to reach the legal form of engineering and reservoir lining material polyethylene Which causes a lack of construction costs and increase life span and ease of maintenance in case if the soil is not clearing the lining is placed Geo textile for protection before the polyethylene liner process .



2 - The area of aquaculture ponds:

(uses a product polyethylene with different thickness)

The insulation system using chips of polyethylene and the most important processes used in the construction of aquaculture ponds in general because of its physical features, physical and chemical fully compatible with this type of docks and purpose used for it because of the effectiveness of the distinctive aspects of the process and economic development in area so the aquaculture ponds is aquaculture in areas of limited areas under the administration and direct control of man.



The field of animal and poultry

(uses a product polyethylene and PVC with different thickness)

Proven research, practical experience, a close relationship and close links between the use of Shit insulation of polyethylene and all the various activities related to this area

Bursh: brushing shit polyethylene underneath and then tossing them brush article of hay and straw mulch And otherwise helps to get rid of the problem of moisture and cold, with falling down the brush and the chicks that the presence of insulation it easier to turn the brush becomes dry and loose and free from worms, rodents, poisons floor.

Battenes and batteries breeding rabbits: Shit brushing - down unarmed breeding batteries making it easier to waste collection and cleaning and hygiene and the prevention of terrestrial rodents and worms.

Roofs and floors of wards breeding: Protection of surfaces from the weather and the cleanliness of floors and easily cleared and the collection of waste from them in an easy, healthy and safe.

Industry belts: To manufacture he belt assembly glaucoma poultry production lines used in poultry farms, broiler chicks and table eggs.



The petroleum sector and mining

(used a product polyethylene and Geo textile in different thickness)

Used in all areas related to the exploration sector, and the search for oil and mining projects such as significantly different :

Mining industry: Used in lining the docks of depositing , extracting minerals and mining operations of various types Because of its ability to withstand chemical substances and physical and natural factors on the process of extraction of minerals within those chemicals used in the cyanide extraction is also used to isolate the mines

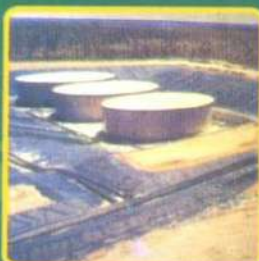
Pools of oil impurities: Is used for lining ponds all impurities resulting from the work of different drilling screw.

Crude oil storage tanks: Are lined internally and externally to protect them from all the fluctuations of ground and air.

Aquarium oils and chemicals: They are lined to retain all the properties of their own without change.

Ceilings and floors caravan: To protect them from weather and moisture and keep it in the sun, as well as protection from chemicals and different salt.

Storage basins of drinking water for petroleum sites





ARASYA PLASTIC

Welding:

The process of welding (polyethylene, Geo textile and PVC) site using several types of welding machines, automatic and manual and manual welding or extrusion, according to the quality of welding to be carried out both in the vertical direction (walls) Direction or horizontal (floors) or angles and Staff (corners) and narrow spaces or holes or defects, if any, displayed no less overlap (passenger) of 10 cm and is chosen the most suitable type of welding process according to fish and working conditions .

Test method:

Is the process of testing the site after the welding have many ways to make sure the quality of welding by type of insulating material and thickness.



Properties of the product:

Resistance to weathering: Have high resistance to UV radiation and immune great fit thanks to the ozone oxidation of the carbon composite coal.

Mechanical Properties: Material has a very high resistance to tearing and penetration with the addition of rocks and dust from the soil surface.

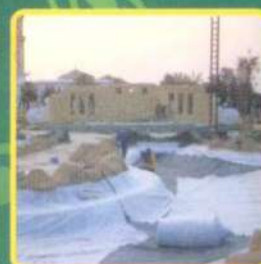
Chemical resistance: A very great resistance of organic materials and inorganic acids, such as batteries, brake oil, Engine oil, as well as the materials used in water treatment is not affected by any kind of chemical substances.

Compound of soil: Have the ability to resist soil and are not affected by the aggressive chemicals used in soil treatment and the nomination process does not allow the growth of algae and mold and micro-organisms.

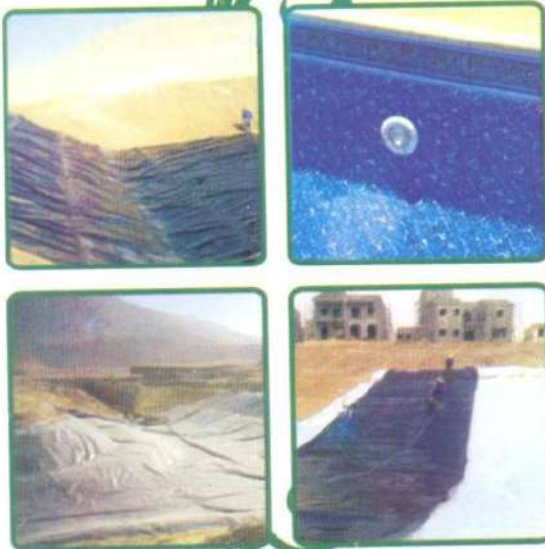
Hydraulic: Have high resistance to permeability does not allow the entry into force of water through surface.

Limitation: Maintain this article after a very long time and under conditions of high temperature characteristics will not become fragile and are resistant against rot and decay and decomposition have the ability as high tension and elasticity with different temperature.

Physical Properties : Resistant to ozone - have a high resistance to tensile strength - have a high resistance to elongation has high resistance to tearing a contact angle greater than 25 degrees - have a coefficient of thermal expansion.

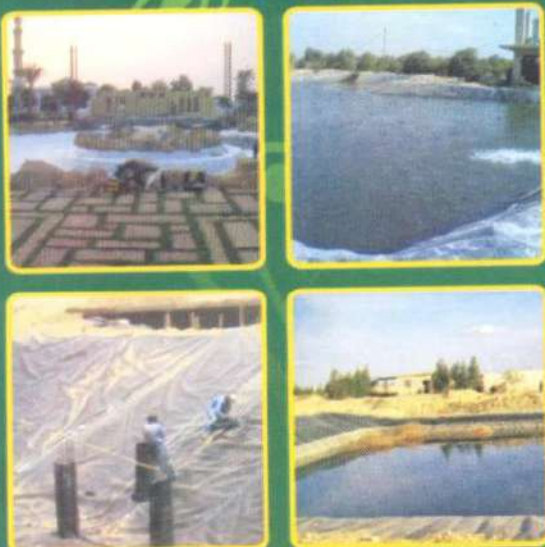


Requirements to be met when selecting foam laminates and polyethylene:



- 1 - Its unique ability to prevent the permeability of water and liquids from it.
- 2 - To be of chemical and physical properties and mechanical prominence.
- 3 - We must bear all the weather factors that are exposed in terms of temperature changes or exposure to ultraviolet radiation.
- 4 - We must have the ability to resist the impact of any chemicals or any salts are in the middle of the Pacific.
- 5 - To retain their own characteristics over the life span of the project.
- 6 - We must be resistant to all stresses, which are exposed only tensile stresses and tear and be of great potential for elongation.
- 7 - The chip surface is smooth and free from wrinkles and holes and needles appropriate for the nature of the soil by the user as well as the characteristics of the surrounding.
- 8 - Taking into account that fit the specifications of the chips such as the stability of thermally-dimensional longitudinally and transversally, and the tensile strength and elongation and flexibility coefficients, leaving ripples allows expansion and contraction so as not exposed chips for low mechanical properties.

Public uses of the product:



- 1 - Lining pools of water conservation of agricultural land and desert.
- 2 - Lining ponds of fish farms and shrimp farms.
- 3 - Lined with all kinds of foundations and roofs of buildings and architectural Bishop.
- 4 - All kinds of lining canals and drains and waterways.
- 5 - Lining artificial lakes in villages and tourist resorts.
- 6 - Isolate all kind of swimming pool.
- 7 - Lining ponds and landfills the garbage waste Petroleum.
- 8 - Lining oxidation ponds, sewage treatment plants.
- 9 - Lining with water fountains and flower base and reservoirs of industrial safety.
- 10 - Lined with all kinds of Chemical basins.
- 11 - Lining the surfaces to be planted (planting surfaces).
- 12 - Lined with all types of landfills.
- 13 - Lining ponds to extract the various minerals.
- 14 - used in dams and water barriers.
- 15 - Field of animal and poultry