

COMPANY PROFILE

Engaged in the Iron & Steel Industry since 2004, Doyen Holding Co., Limited is an integrated steel trader with major operations in import & export and steel process. Pride ourselves on creating value for clients for more than 15 years; we focus intensively on various demanding accounts in the market of European, Asia, Mid-east, South America and Africa.

Dedicated ourselves to putting our global service into action, we have established long-term strategic cooperation relationships with Chinese top-ranking iron and steel producing enterprises and heavy-duty equipment manufacturing industries which are all through our rigorous comparison and selection, providing section steels, coils & plates, hollow sections, seamless pipes and steel equipments, always with an eye to serving our customers' needs in global marketplace.

Centered on sophisticated steel expertise and professional administration, our company is essential to sustain a global brand value in the Iron & Steel import and export industry. Focusing on the vision of Self-discipline and Social commitment guides our company towards strengthening international cooperation, and enhancing competitiveness of China Iron & Steel Industry with a global outlook and presence.

We are looking forward to your incoming cooperation.

STRUCTURAL STEEL

➤ LONG PRODUCTS



Equal Angle



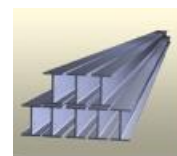
Unequal Angle



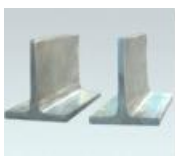
Channel



I-Beam



H-Beam



T-Steel



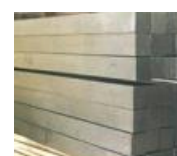
Cold Forming
Section Steel



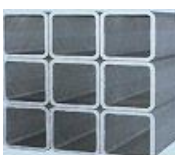
Round Bar



Flat Bar



Square Bar



Square Tube



Rebar



PC Wire



Wire Rod



PC Strand Wire

◆ STANDARD

Product	Standard		
	JIS	EN	ASTM
Equal Angle Bar	JIS G3192	EN10056	ASTM A36, A572
Unequal Angle Bar	JIS G3192	EN10056	ASTM A36, A572
Channel Bar	JIS G3192	EN10279	ASTM A36, A572
I-Beam	JIS G3192	EN10024	ASTM A36, A572
H-Beam	JIS G3192, JIS A5526	EN10034, BS4-1	ASTM A36, A572
T-Bar	JIS G3192	EN10055	ASTM A36, A572
Cold Forming Sections	JIS G3466	EN10219	ASTM A500
Round Bar	JIS G3191	DIN1013	ASTM A29/A29M
Flat Bar	JIS G3194	DIN1017	ASTM A29/A29M
Square Bar	JIS G3191	DIN1014	ASTM A29/A29M
Square Pipe	JIS G3466	EN10219	ASTM A500
Rebar	JIS G3109, JIS G3112	BS4449	ASTM A615, A706
PC Wire	JIS G3536	BS5896	ASTM A416
Wire Rod	JIS G3505, JIS G3506	EN15630	ASTM A510, A752
PC Strand Wire	JIS G3536	BS5896	ASTM A416

◆ APPLICATION



STRUCTURAL STEEL

➤ HOT ROLLED STEEL COIL / SHEET



◆ STANDARD & GRADE

Usage	DIN		JIS	
	Standard	Steel Grade	Standard	Steel Grade
Cold Forming	EN 10111	STW22, STW23, STW24	JIS G3131	SPHC, SPHD, SPHE
General Structural Purposes	DIN 17100	St33, St37-2 St37-3, St44-2 St50-2, St52-3	JIS G3101	SS330, SS400 SS490, SS540
Weldable Normalized Structural	DIN 17102	StE255, StE355	JIS G3106	SM400, SM490 SM520, SM570
Machine Structural	DIN 17200 DIN 17210	C22, C35 C10, C15	JIS G4051	S20C, S35C S09CK, S15CK
Boiler	DIN 17155	HII, 19Mn6	JIS G3103	SB410
Atmospheric Corrosion Resisting	SEW087	WSt37-2, WSt52-3	JIS G3125	SPAH

➤ HOT ROLLED STEEL PLATE



◆ STANDARD

Application	Standard or Certificate		
	ASTM	EN	JIS
Structural	ASTM A36, ASTM A283 ASTM A572, ASTM A573 ASTM A633, ASTM A678 ASTM A710	EN10025, EN10137-2	JIS G3101 JIS G3106 JIS G3128 JIS G3136
Boiler and Pressure Vessel	ASTM A202, ASTM A299 ASTM A302, ASTM A387 ASTM A515, ASTM A516 ASTM A537, ASTM A662	EN10028	JIS G3115, JIS G3118 JIS G3119, JIS G3120 JIS G3126, JIS G3127 JIS G4109
Atmospheric Corrosion Resisting	ASTM A242, ASTM A588 ASTM A709, ASTM A871		JIS G3114 JIS G3125
Machine Structure	ASTM A304	EN10083	JIS G4051

ROOFING STEEL MATERIAL

➤ HOT DIPPED GALVANIZED COIL



Product Line 1: Using CLECIM France continuous hot dip galvanizing and BRICMONT America horizontal annealing furnace technology, design the annual output of 500,000 tons.

Using modified Sendzimir coating process.

Product Line 2: Using Danieli Italy continuous hot dip galvanizing and DCC all radiant tube vertical annealing furnace technology, design the annual output of 450,000 tons.

Using UEC Continuous hot dip galvanizing process.

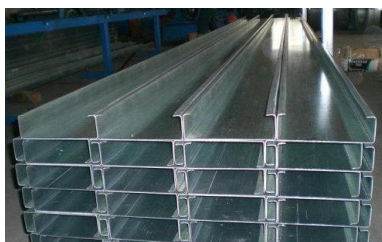


Product Line 3: Using UEC Continuous hot dip galvanizing process, takes cold rolled steel coil as raw material, design the annual output of 200,000 tons.

◆ SIZE & STEEL GRADE

Line No	Dimension (mm)	Steel Grade		
		JIS G3302	EN10346	ASTM A653
1	Thickness: 1.0-4.0 Width: 1000-1500	SGCC, SGCD, SGC340 SGC400, SGC440 SGHC, SGH340	DX51D+Z S250GD+Z S280GD+Z S320GD+Z	SS230, SS255 SS275, SS340
2	Thickness: 0.35-2.0 Width: 1000-1500	SGH400, SGH440 SGH490, SGH540 S550GD+Z SS550
3	Thickness: 0.12-0.4 Width: 600-1250	SGCC	DX51D+Z	SS230, SS255 SS275

◆ APPLICATION



ROOFING STEEL MATERIAL



德仁控股
DOYEN HOLDING

➤ GALVALUME STEEL COIL



Composition of Metallic Coating:

43.5%Zn, 1.5% Si, 55% AL

Coating: AZ40-AZ160 (g/m²)

Surface: Chromated / Oiled / Dry / AFP

Thickness: 0.13mm-0.7mm

Width: 750mm-1250mm

Steel Grade:

JIS G3321: SGLCC, SGLC400 to SGLC490

EN10346: DX51D+AZ,

S250GD+AZ to S450GD+AZ

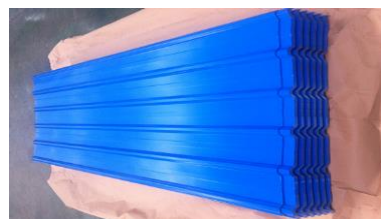
ASTM A792: CS type A/B/C

SS255 to SS480

Product Line



➤ PREPAINTED STEEL COIL (PPGI / PPGL)



Product Line: Annual output of 150,000 tons. All key electronic control equipment and instrument adopts Siemens products. Allocation of 2 fine coating machine.

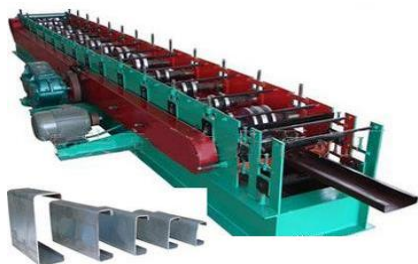
Dimension: 0.13-1.2 x 600-1250mm

Coating: PE, SMP, PVDF, HDP

Film Thickness: 5-8um+10-20um

Base Metal: Galvanized Steel Coil or Galvalume Steel Coil

➤ ROOFING MATERIAL PROCESSING MACHINERY

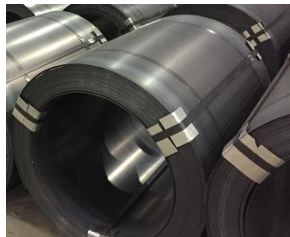


➤ **HOT ROLLED STEEL COIL FOR WELDING PIPE (SPHT)**

Product Line: The 1780 line includes AWC rough rolling, SSC, HGC, coil box, AGC fine rolling F1-F7, roll bending and roll shifting, CVC roll shape control, technological lubrication, laminar cooling AC-AC inverting, etc. Annual production capacity of 3,650,000 tons.

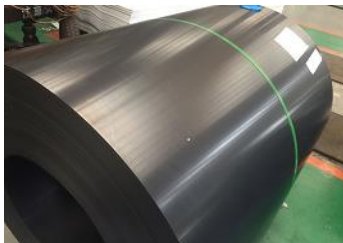
Dimension: 1.0-14 x 1000-1630mm

Steel Grade: SPHT1, SPHT2 as per JIS G3132



Steel Grade	Tensile Strength N/mm2	Elongation (%) under Follow Thickness (mm)				Bendability of 180 Degree T: Thickness(mm)	
		1.0~1.6	1.6~3.0	3.0~6.0	6.0~13	Inside radius	
						T≤3.0	3.0~13
SPHT1	≥270	≥30	≥32	≥35	≥37	Appress	0.5T
SPHT2	≥340	≥25	≥27	≥30	≥32	1.0T	1.5T

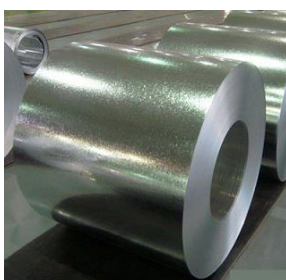
➤ **BLACK ANNEALED COLD ROLLED STEEL COIL**



Product Line: 300,000tons continuous annealing line adopts the radiation characteristics of vertical furnace continuous annealing technology, equipped with complete heating cooling section, tension and accurate temperature setting. The core is eliminated by annealing process of cold hardening, to achieve the required properties of sheet.

Dimension: 0.3-2.0 x 900-1250mm

➤ **HOT DIPPED GALVANIZED COIL**



Dimension (mm)	Steel Grade		
	JIS G3302	EN10346	ASTM A653
Thickness: 1.0-4.0	SGCC,SGCD	DX51D+Z	SS230
	SGC340	S250GD+Z	SS255
Width: 750-1500	SGC400, SGC440	S280GD+Z	SS275
	SGHC, SGH340	S320GD+Z	SS340
	SGH400, SGH440
	SGH490, SGH540	S550GD+Z	SS550

STEEL COIL FOR MAKING LPG CYLINDER



◆ PRODUCTION FACILITIES

Steel-making Line: Equipped with three 150t top-bottom combined blown converters, three LF refining furnaces, one RH vacuum refining furnace.

The Rolling System: Includes one 1700mm hot rolling line and two level off productions lines, with the annual capacity of 2 million tons.



Continuous Pickling Line: The high speed turbulence TURBOFIO technology was imported from Danieli, designed annual production capacity is 1million tons.

Dimension: 1.2-12.7 x 850-1600mm

◆ STEEL GRADE

Standard	Steel Grade	Mechanical Property			
		T.S. (Mpa) Rm ≥	Y.S. (Mpa) Rel ≥	EL. (%) A80mm ≥	180 Degree Bend Test r-inner radius a-thickness
JIS G3116	SG255	400	255	32	r=1.0a
	SG295	440	295	30	r=1.5a
	SG325	490	325	26	r=1.5a
	SG365	540	365	24	r=1.5a
EN10120	P245NB	360	245	30	r=1.0a
	P265NB	410	265	28	r=1.5a
	P310NB	460	310	24	r=1.5a
	P355NB	510	355	22	r=1.5a
Remark*	Above elongations be more than that stipulated in standard to ensure the material will not be cracked when deep impacted in real use.				

◆ APPLICABLE CYLINDER PRODUCING LINE



HOUSE-HOLD APPLIANCE STEEL MATERIAL

➤ COLD ROLLED STEEL COIL

Product Line: Adopts French STEIN continuous annealing furnace, Austria VAI tension leveller, PPH turbulence shallow slot pickling technology, high stiffness five stands six roller mill, Thermo Fisher's thickness detection technology. Across the German Siemens drive - automatic control technology, ABB sheet shape gauge, on-line automatic control is realized.



◆ SIZE & STEEL GRADE

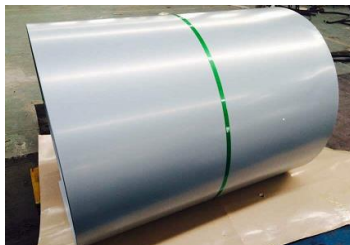
Size(mm)	Steel Grade		
	JIS	EN	ASTM
Thickness: 0.2-2.0 Width: 700-1430	SPCC, SPCE, SPCE SPCEN SPP	DC01, DC03, DC04 DC05, DC06 DC04EK, DC06EK DC04ED, DC07EK	SAE1006, SAE1008 SAE1010, SAE1020 SAE1045, SAE1050 A424 Type1/2/3

◆ APPLICATION



➤ ELECTRO-GALVANIZED SHEET

Product Line: Adopts the horizontal jet of new plating bath. Can do anti-fingerprinting, oiling, passivation, phosphating and other post-processing. Annual production capacity of 120,000 tons. Products are mainly used in high-grade household appliances.



Steel Grade: JIS G3313 – SECC SECD SECE
EN10152 – DC01+ZE DC03+ZE DC04+ZE
Coating Mass: 3-60g/m² (two sides)
Thickness: 0.3-2.0mm
Width: 900-1350mm

◆ APPLICATION



HOUSE-HOLD APPLIANCE STEEL MATERIAL

➤ HOT-DIP AL-ZN COATED STEEL SHEET



**Non-skinpassed
Spangle**



**Skinpassed
Spangle**



Regular Spangle



Minimized Spangle

Composition of Metallic Coating: 43.5%Zn, 1.5% Si, 55% AL

Surface Treatment: Chromate passivated, Oiling, Anti-fingerprint

Dimension: 0.2-2.0 x 700mm-1250mm



Steel Grade:

JIS G3321: SGLCD, SGLC400 to SGLC570

EN10346: DX51D+AZ to DX54D+AZ

S250GD+AZ to S550GD+AZ

ASTM A792: CS type A/B/C

SS255 to SS550



➤ PREPAINTED STEEL SHEET

Product Line: Designed by the FATA companies in the United States, adopts roller coating techniques, passivation system, the FATA single slide track coater, hot pressing decorative pattern, cooling laminating and a series of advanced equipment and technology. Annual production capacity of 120,000 tons.

Dimension: 0.15-2.0 x 700-1300mm

Base Metal: Cold-rolled, Hot-dip Zn Coated, Alu-Zn Coated
Electro-Galvanized

Paint Type:

PE (polyester)

SMP (silicon modified Polyester)

HDP (high-durability Polyester)

PVDF (polyvinylidene fluoride)

Sketch Map of Sectional Structure
Prepainted Steel Sheet

- (Finished coating)
- (Primer)
- (Chemical conversion coating)
- (Metallic coating)
- (Cold-rolled steel sheet)



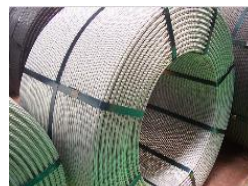
◆ APPLICATION



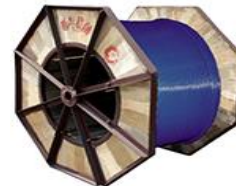
STEEL STRAND WIRE



PC Strand Wire



**Galvanized
Steel Strand**



**Unbonded
Steel Strand**

◆ PRODUCTION PROCESS

The high carbon wire rod → Pickling and Phosphating treatment → Phosphate material inspection
→ Drawing treatment → Semi finished steel wire inspection → Twisting and Stable treatment →
Wire coiling → Finished product inspection.

◆ STEEL GRADE & DIMENSION

Standard	Steel Grade	Nominal Diameter (mm)	Minimum Breaking Load (kn)	Mass Per KM (kg/km)
JIS G3536	SWPR2	2.90	25.497	104
	SWPD3	2.90	38.246	156
	SWPR7A	6.20	40.207	182
		7.90	64.724	293
		9.30	88.750	405
		10.80	119.641	546
		12.40	159.848	729
		15.20	240.263	1101
	SWPR7B	9.50	101.989	432
		11.10	138.274	580
		12.70	183.384	774
		15.20	260.857	1101
	SWPR19	17.80	387.363	1652
		19.30	451.106	1931
		20.30	495.236	2149
		21.80	572.708	2482
ASTM A416	250 (1725)	9.50	89.000	405
		11.10	120.100	548
		12.70	160.100	730
		15.20	240.200	1094
	270 (1860)	9.53	102.300	432
		11.11	137.900	582
		12.70	183.700	775
		15.24	260.700	1102

➤ **STEEL WIRE**



Black Annealed Wire



Hot Dipped GI Wire



Electric Galvanized Wire



PVC Coated Wire



Barbed Wire



Razor Barbed Wire

➤ **STEEL MESH**



Hexagonal Wire Netting



Welded Wire Mesh



GI Window Screening



Square Wire Mesh



Chain Link Fence



Gabion Mesh

TINPLATE



◆ PRODUCTION LINE

Anneal Furnace: Bell type hydrogen annealing furnace was designed and manufactured by Haibin Songjing Electric Furnace Company, whose products attain the first class hot treatment level worldwide: re-crystallization, bright annealing. Annual output is 180,000 tons.



Electrolytic Tinning Line: The line owns production speed of 400m/min, with the tin-plated steel sheet annual capacity of 200,000 tons. The process is adopting Filo Stan tin-plate process and advanced technologies such as PT Insolvable anode and IGBT eliminator supply.
Dimension: 0.15-0.45*700-1050mm

◆ TEST FACILITIES

Three sheet thickness measuring instruments and two sheet pin hole measuring instruments are detection in the production line



Automatic Cupping
Testing Machine



Tin-coated Volume
Analysis Meter
From Israel



Automatic Oil
Coating Meter
From Japan



Digital Display
Surface Roche
Durometer

◆ STEEL GRADE & CODE FOR TIN-COATING

Standard	Steel Grade	Type	Code
ASTM A623M	DR-7.5, DR-8, DR-8.5, DR-9, DR-9.5	Bright Surface	B
		Rough Surface	R
		Silver Surface	S
JIS G3303	T-1, T-2, T-2.5, T-3, T-4, T-5, DR-8, DR-9, DR-9M, DR-10	Tarnished Surface	M
		Chemical Passivation	CP
		Electric Chemical Passivation	CE
EN 10203	DR550, DR620, DR660	Low Chrome Passivation	LCr

SEAMLESS PIPE



◆ PRODUCTION LINE

Factory I-Line 1: A '50' MANNESMANN type puncher. Annual production capacity of 18,000 tons.

Factory I-Line 2: A '70' MANNESMANN type puncher. Annual production capacity of 36,000tons.

Factory I-Cold Drawing Unit: includes a 80t cold drawing machine, a 20t cold drawing machine, a 10t cold drawing machine, a 5t cold drawing machine.

Pipe Diameter: 1/2inch – 5inch



Factory II-Steelworks: One LF furnace of 80tons, one VD furnace of 80tons.

Factory II-Φ180FQM Unit: Core equipments are circular heating furnace, germ puncher, FQM continuous mill, all are designed by Danieli from Italy and German SIEMENS and KOCKS.

For the fining line, the Foerster defect detection equipment of Germany is being used.

Annual production capacity is 650,000tons.

Pipe Diameter: 2inch – 6inch



Factory II-Φ273 Accu Roll Unit: The Main equipments include germ puncher, A-R rolling mill, three-roller micro-tension reducing mill. Annual production capacity is 250,000tons.

Pipe Diameter: 4inch – 10inch

◆ TEST FACILITIES



Infrared Carbon Sulfur Analyzer



300 KN high temperature electronic tensile testing machine



Scanning Electron Microscopy



Inductive Coupled Plasma Analyzer

◆ STEEL GRADE

Standard No	Steel Grade
ASTM A53 / A106	Grade A, Grade B
ASTM A252	Grade 1, Grade 2, Grade 3
ASTM A333 / A334	Grade 1 - 11
ASTM A423	Grade 1, Grade 2
ASTM A501	Grade A, Grade B
API 5L	Grade A, Grade B, X42-X70 (PSL1,PSL2)
API 5CT	J55, K55, N80, L80, C90, P110, Q125