



Smrtplnk

# TABLE OF CONTENT

01 FLOOR DECK.

02 WALL.

03 CEILING.

04 COLUMN & BEAMS COVERING.







One Profile For Multiple Application.



**Sanded**



**Nature**



**Azar**



**Brushed**



Color 1

Color 2

Color 3

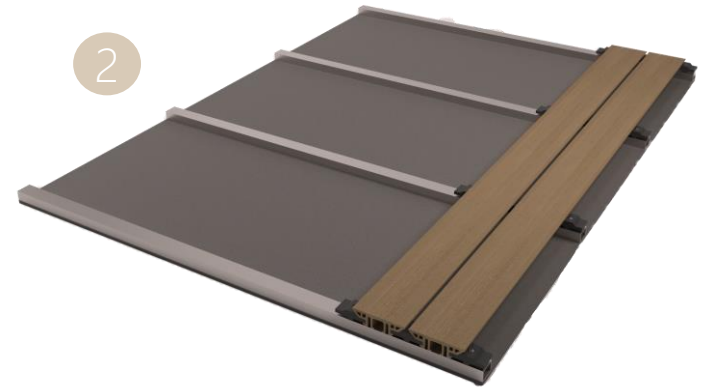
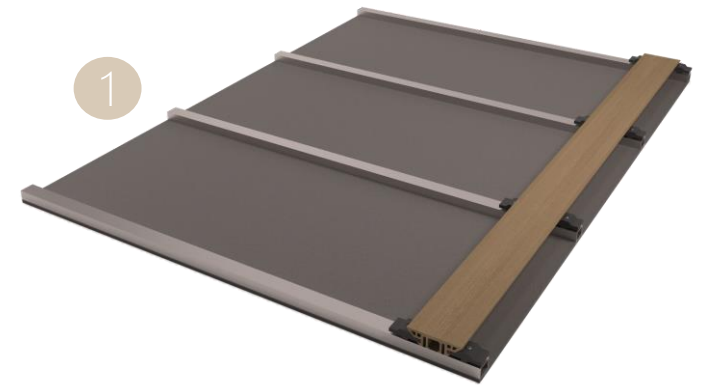
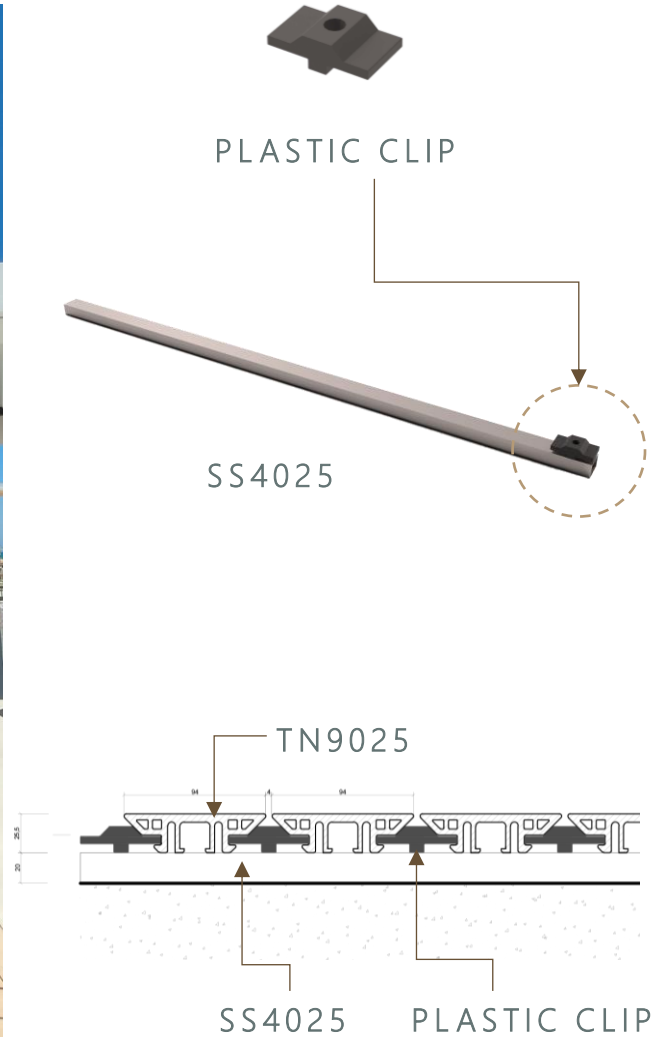
Color 4

Color 5

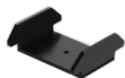
# Smrtplnk

® SMRTPLNK is a patented design for a "Decking & More" boards, owned by "Archinsta". Due to its innovative shape, @SMRTPLNK is the first decking profile with 45 degrees edges, allowing it to be installed in different areas, such as; on floors, stairs, ceilings, columns, beams, walls ect...

## Floor Deck no.1



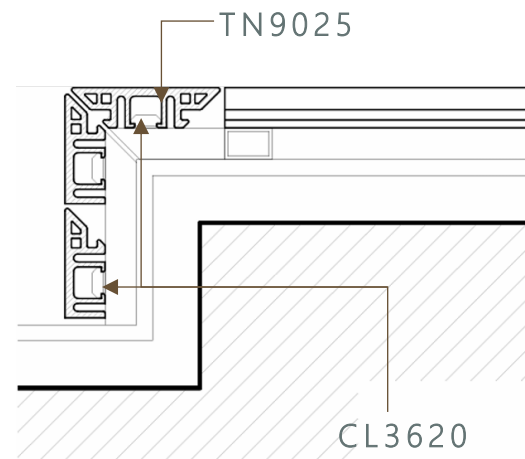
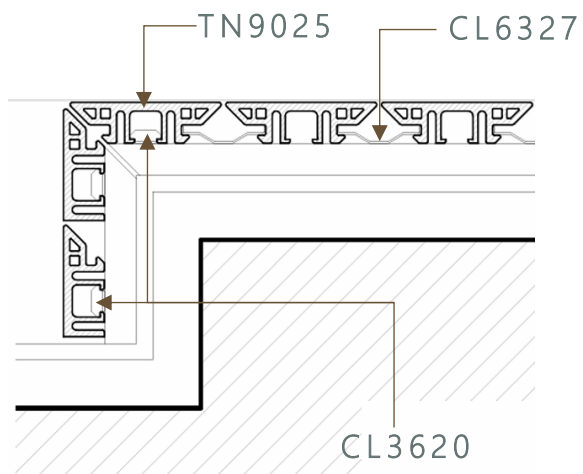
## Raised Floor Deck no.2



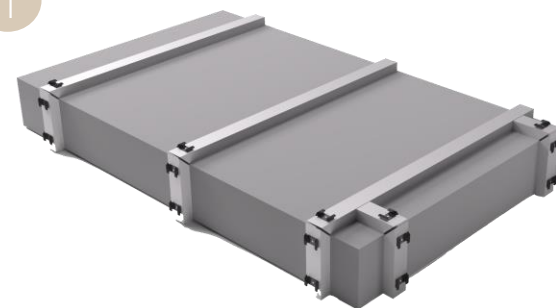
CL3620  
FIXING CLIP



CL6327



1



2

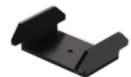


3

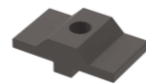




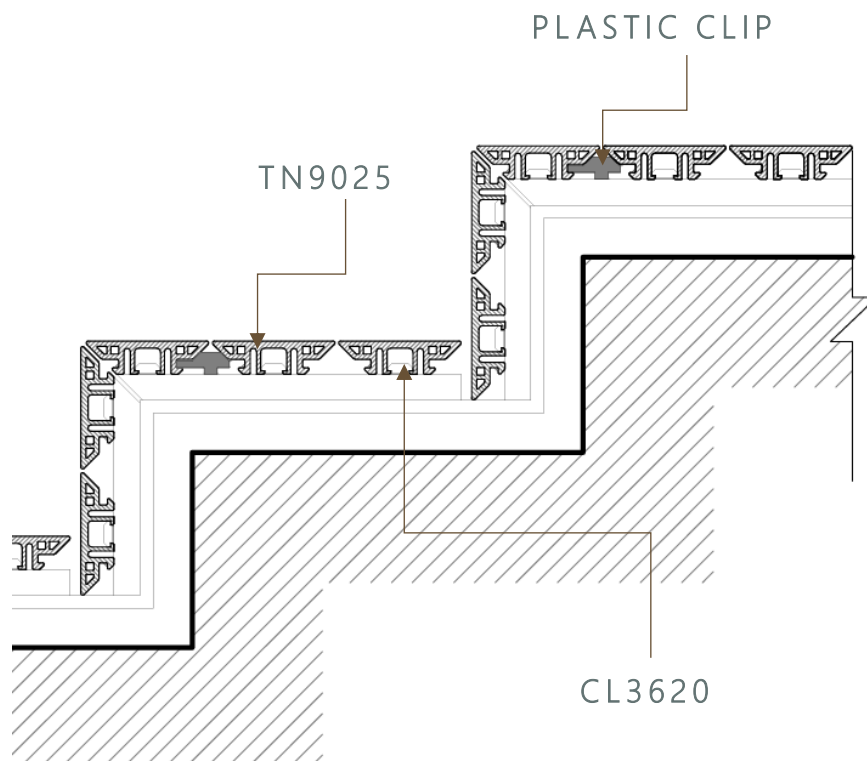
## Stairs Deck



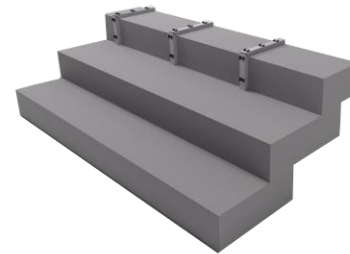
CL3620  
FIXING CLIP



PLASTIC CLIP



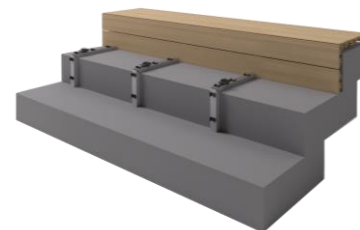
1



2



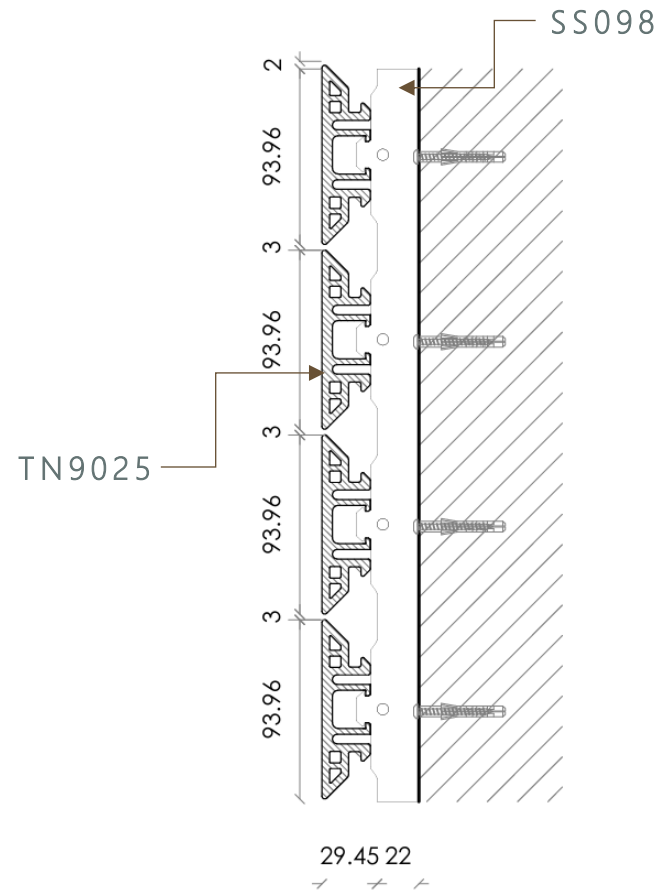
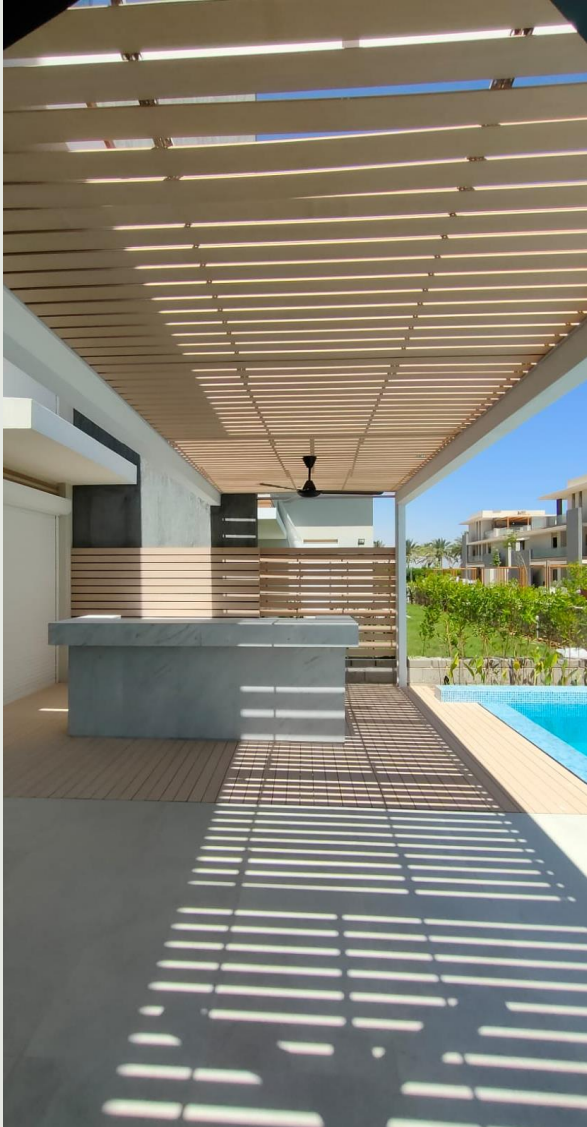
3



4

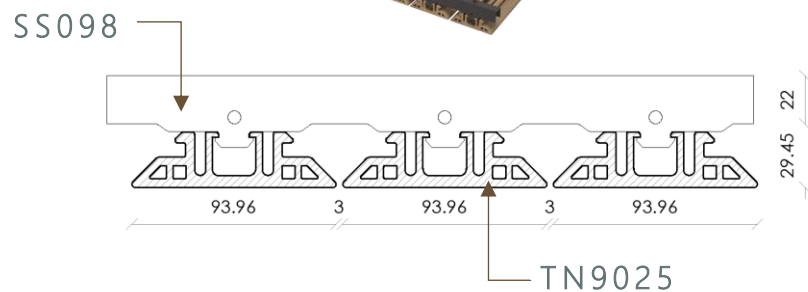
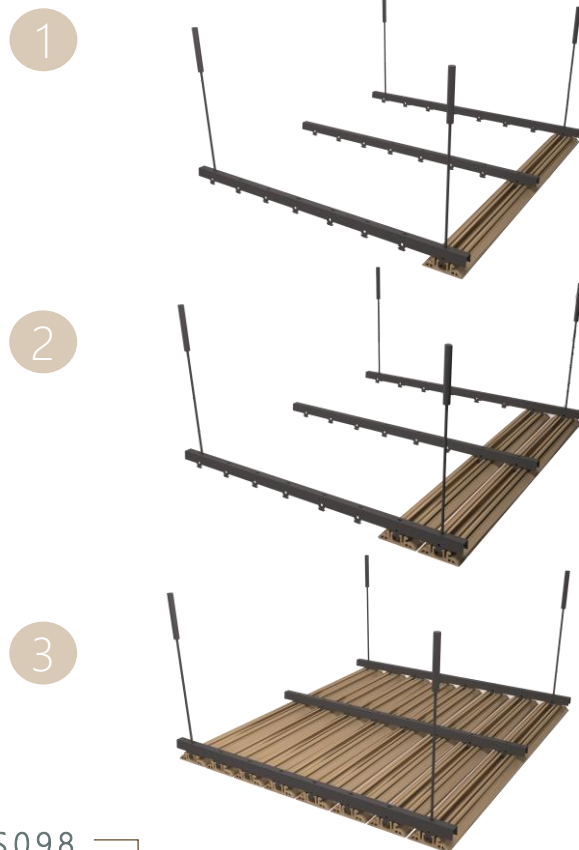


## Wall no. 1

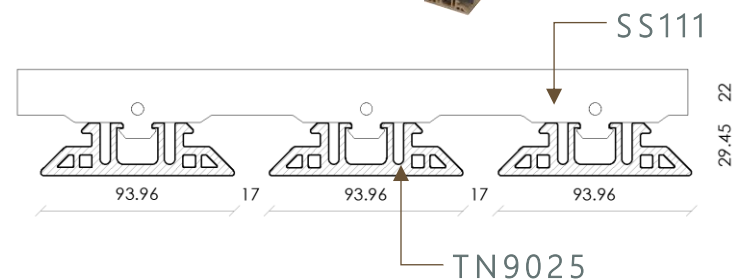
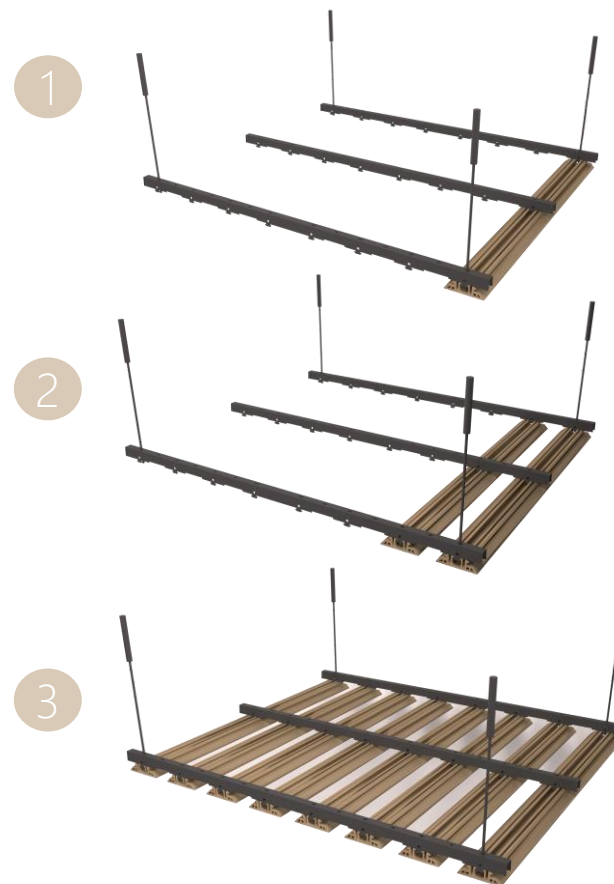




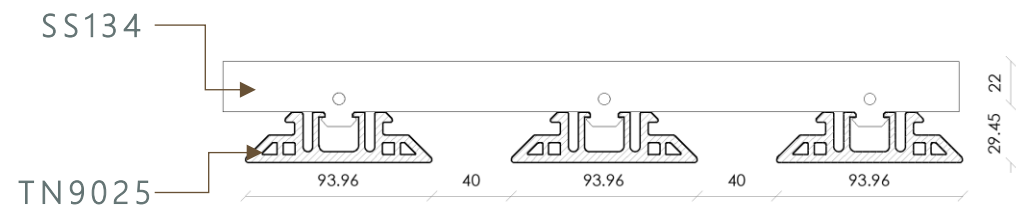
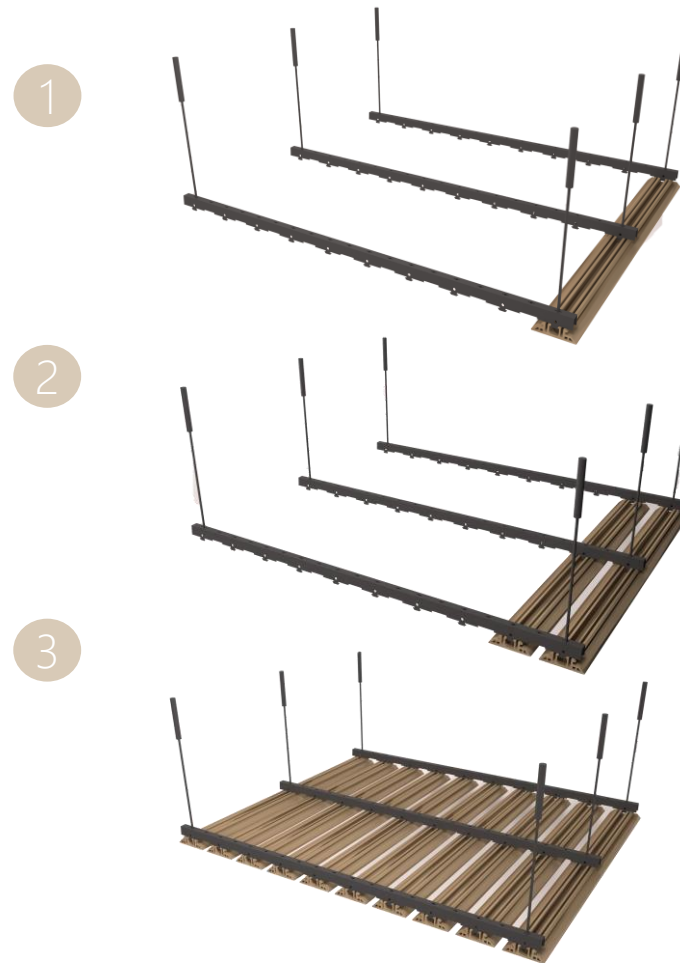
## Ceiling no.1



## Ceiling no.2



## Ceiling no.3



## Ceiling no.4 Louvers Style



LOUVERS CLIP

1



2

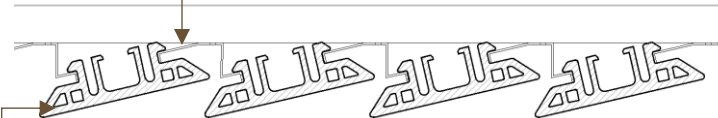


3



LOUVERS CLIP

TN9025

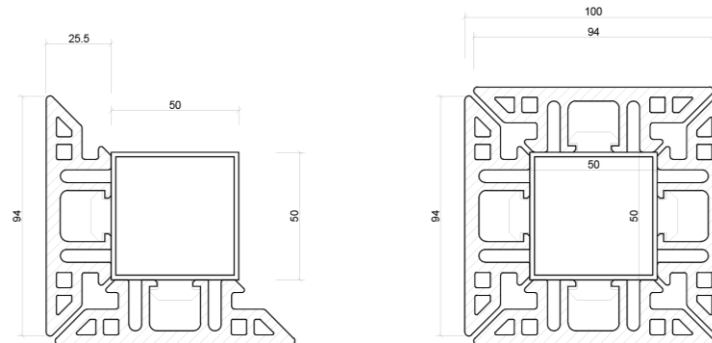




## Ceiling no.3



CL3620



Flexural strength test according to ENISO178.

22.38 MPA

Flexural modulus test according to ENISO178.

1.76 GPa

Moisture content test according to EN322

0.145

Dimensional change after water immersion (after 7 days at 20°C).

0.804

Linear Thermal Expansion according to ASTM E831.

0.0033mm

Flammability test according to UL 94.

Type V-0



@SMRTPLNK

 [Info@smrtplnk.com](mailto:Info@smrtplnk.com)